



Annual Berth Fees

Effective – 01/01/20

Berth Size	Annual	Quarterly Instalment	6 Monthly Instalment
6	\$4,170	\$1,110	\$2,200
6	\$5,560	\$1,480	\$2,920
10 UG	\$6,250	\$1,670	\$3,280
10	\$7,300	\$1,960	\$3,840
12	\$9,320	\$2,490	\$4,870
13	\$10,230	\$2,740	\$5,380
15	\$12,460	\$3,360	\$6,600
20	\$19,800	\$5,300	\$10,400

Visitor Low Season

Berth Size	Daily	Weekly	Monthly
6	\$55	\$330	\$1,120
6	\$55	\$330	\$1,120
10 UG	\$55	\$330	\$1,120
10	\$65	\$390	\$1,325
12	\$65	\$390	\$1,325
13	\$65	\$390	\$1,325
15	\$90	\$540	\$1,840
20	\$110	\$660	\$2,250

* Peak Season Rates apply
Summer, Easter, Long Weekends, Public Holidays
& Queenscliff Music festival

Visitor Peak Season */**

Berth Size	Daily	Weekly	Monthly
6	\$75	\$450	\$1,530
6	\$75	\$450	\$1,530
10 UG	\$75	\$450	\$1,530
10	\$95	\$570	\$1,940
12	\$95	\$570	\$1,940
13	\$95	\$570	\$1,940
15	\$115	\$690	\$2,350
20	\$140	\$840	\$2,860

** Minimum Night stays apply for the following
Summer 16 Dec– 31 Jan & Easter: Min 4 nights
Queenscliff Music Festival: Min 2 nights

Queenscliff Harbour Pty Ltd

1 Harbour Street, Queenscliff, Victoria 3225 | PO Box 237 Queenscliff, Victoria 3225
03 5258 5459 | ABN 11367 855 370 | info@queenscliffharbour.com.au
queenscliffharbour.com.au

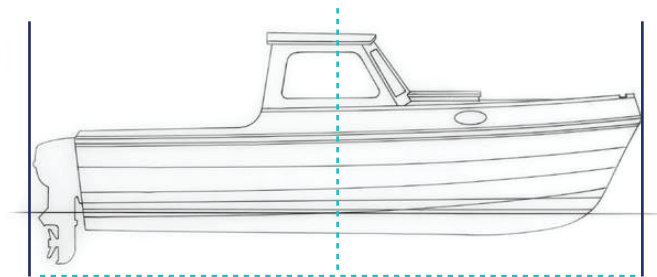


QUEENSCLIFF
HARBOUR

Dry Storage Rates

Effective - 01/01/20

	6mtr	7mtr	8mtr	9mtr	10mtr
2	3460	4110	5080	6060	7030
2.2	3570	4220	5190	6160	7140
2.4	3680	4330	5300	6270	7250
2.6	3790	4430	5410	6380	7350
2.8	3890	4540	5520	6490	7460
3	4000	4650	5620	6600	7570
3.2	4110	4760	5840	6820	7790
3.4	4220	4870	5950	6920	7890
3.6	4430	4970	6060	7030	8000
3.8	4540	5080	6170	7140	8110
4.0+	4650	5190	6270	7250	8220
Outside	3250	3790	4330	4650	5410



Example: LOA= 6.8m Height=3.5m = \$4,970

Max Weight: 9.5tonne Max Length: 10m (33ft).
Not all vessels suitable for dry storage
Rates include all Launch / Retrieval Services.
Charges apply for use of Maintenance Hardstand

Queenscliff Harbour Pty Ltd

1 Harbour Street, Queenscliff, Victoria 3225 | PO Box 237 Queenscliff, Victoria 3225
03 5258 5459 | ABN 11367 855 370 | info@queenscliffharbour.com.au
queenscliffharbour.com.au